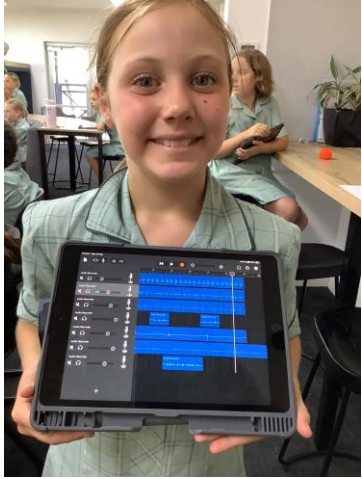


# 1:1 iPad Program 2024

Information Session

# Welcome and thanks for coming (RC)





# Acknowledgment of Country

We acknowledge and pay our respects to the Kurna people, the traditional custodians whose ancestral lands we gather on.

We acknowledge the deep feelings of attachment and relationship of the Kurna people to country and we respect and value their past, present and ongoing connection to the land and cultural beliefs.



# iPad Programmes across year levels

## Foundation – Year 1 students:

Set of iPads shared amongst the year level. Year level log in.

## Year 2–3 students:

\*1 to 1 – 1 iPad allocated to each student with an individual log in.

\*School owned iPads– stays at school.

\*Not the same iPad as in Yr 4.

## Yr 4–6 students:

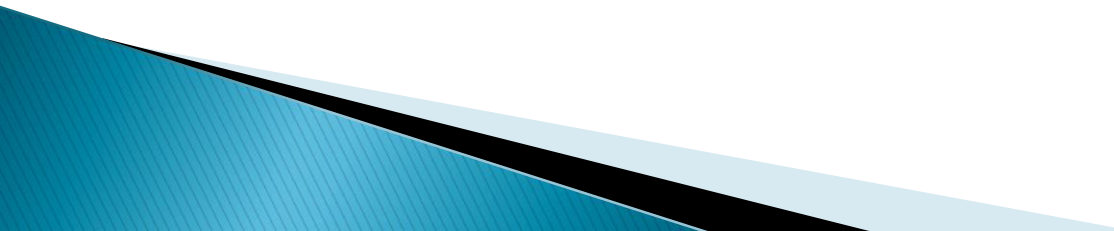
\*Each Yr 4 student is provided with a brand new iPad with an individual log in. 9th Gen iPad.

\*School-owned device (until the student leaves) and it's paid for by parents throughout Years 4–6. ICT Levy.

\*Generally goes home each night for charging / home work.



# Why iPads?

- ▶ Easy and convenient to use
  - ▶ Engaging, interactive, fun learning tool
  - ▶ Greater student access and efficiencies
  - ▶ Support learning styles and needs
  - ▶ Fosters collaboration, communication skills
  - ▶ Opportunities for expression & creativity
  - ▶ Greater teaching/learning opportunities
  - ▶ Apple TV
- 

# The Big Question!

What are Immanuel students doing and why?

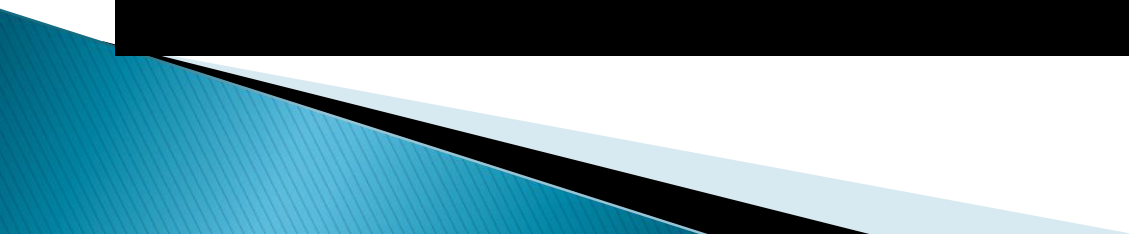
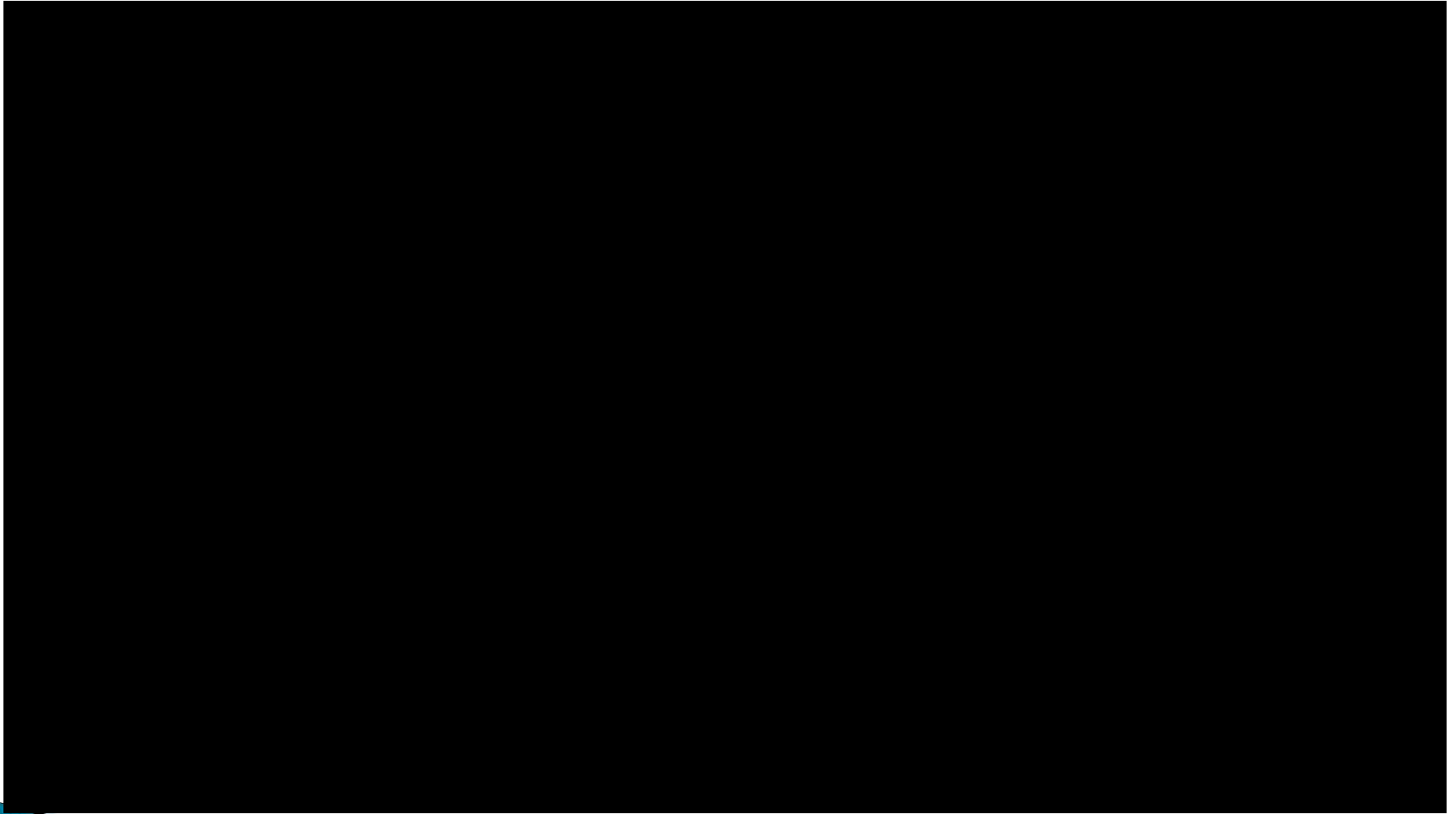
“The world doesn’t care what kids know, it cares about what they can do with what they know....”

## NOT CONTENT!

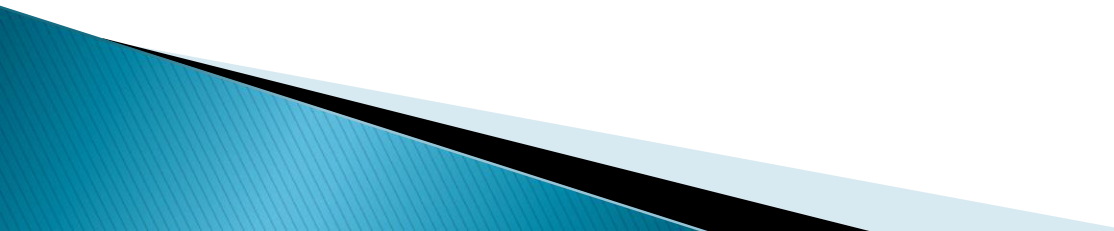
- ▶ Creativity
- ▶ Problem Solving
- ▶ Critical Thinking & Decision Making
- ▶ Communication
- ▶ Collaboration



So what does that look like in action?



# What does this mean? (AB)

- ▶ Haven't got rid of books and handwriting
  - ▶ Greater student access – efficiencies
  - ▶ Use of iPads for learning at home
  - ▶ Greater staff flexibility in planning and delivering learning
    - Seesaw for example
  - ▶ Hasn't replaced other forms of learning
  - ▶ Varying levels of tech integration
    - As per SAMR model
- 



R

## REDEFINITION

Technology allows for the creation of new tasks, previously inconceivable

M

## MODIFICATION

Technology allows for significant task redesign

A

## AUGMENTATION

Technology acts as a direct substitute, with functional improvement

S

## SUBSTITUTION

Technology acts as a direct substitute, with no functional change

TRANSFORMATION

ENHANCEMENT

# Student work samples (RC)

- ▶ Photos of student's work
  - multimedia
  - padlets
  - presentations
  - tech elective work

# SUPPLY CHAIN OF COFFEE

## Where coffee is grown

Coffee is grown in a lot of places around the world for example - South America, Africa, The Middle East and South East Asia. Coffee beans are sourced from small trees or shrubs that are grown in sub tropical areas usually within 1500 kms of the equator. Coffee can be grown in flat areas but is mostly grown in hilly areas.

Person connected - Farmer



Coffee Bean Production in our World



SUPPLY CHAIN OF COFFEE



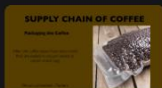
SUPPLY CHAIN OF COFFEE



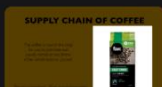
SUPPLY CHAIN OF COFFEE



SUPPLY CHAIN OF COFFEE



SUPPLY CHAIN OF COFFEE



SUPPLY CHAIN OF COFFEE



Problems and Issues with Coffee Bean Production



Problems and Issues with Coffee Bean Production



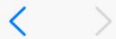
Problems and Issues with Coffee Bean Production



What can stop the problems?



What can I do to help the Farmers?



AA

padlet.com



why won't my ipad airdrop to my iphone - Google Search



Sustainable Farming-working Padlet

:Padlet



saharachallen + 3 • 1d

## Sustainable Farming-working Padlet

Made by Hugo, Henry, Sahara and Kayedn.

### Central Idea



Hugo 2yr

The way agriculture is managed affects the physical environment

Henry Roeger 2yr

**Different Ways**

- permaculture
- 

saharachallen 2yr

**What does sustainable mean :**

Using natural resources that support the environment. Leaving the land in a better condition.

### LOI 1



saharachallen 2yr

**Impacts of different farming practices on the environment**

- animals ducks/chickens they eat pests in crops which is more sustainable than pesticides. bettongs:
- soil

Henry Roeger 2yr

**Key concepts**

- change

Hugo 2yr

### LOI 2



Hugo 2yr

**Sustainable agricultural practices**

- soil
- positives practices
- slightly touch on ideas for future

Henry Roeger 2yr

**Key concepts**

- causation
- responsibility

Henry Roeger 2yr

**Questions**

How will sustainable farming practices be different in the future?

How is farming changing through generations?

### LOI 3



kayednbeaney 2yr

**Perspective of Practices**

- interviews

Henry Roeger 2yr

**Key concepts**

- perspective
- connection

saharachallen 2yr

**The different p**

Farmers

Produce Buyers

Locals farmer

places

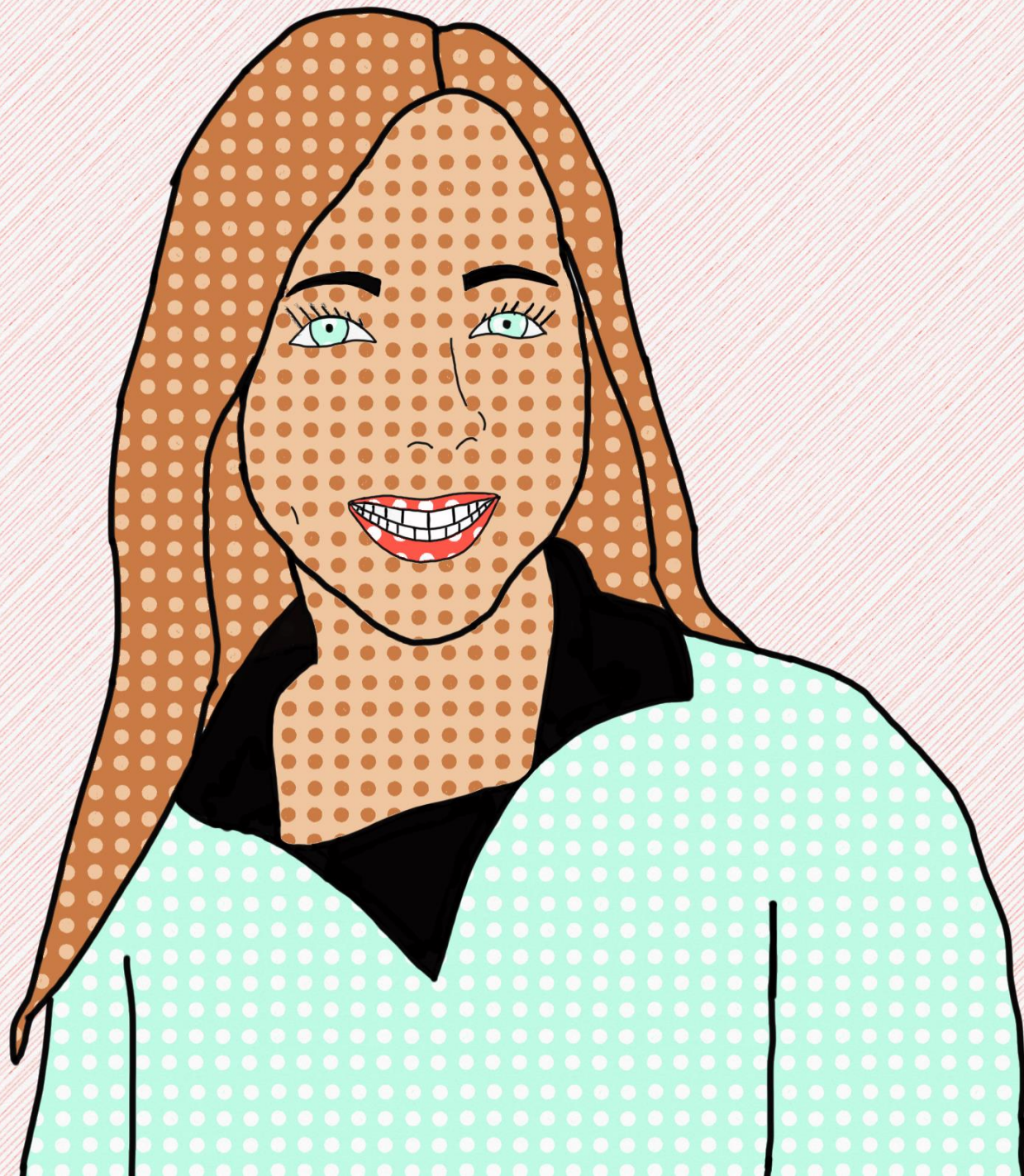
Transportation w



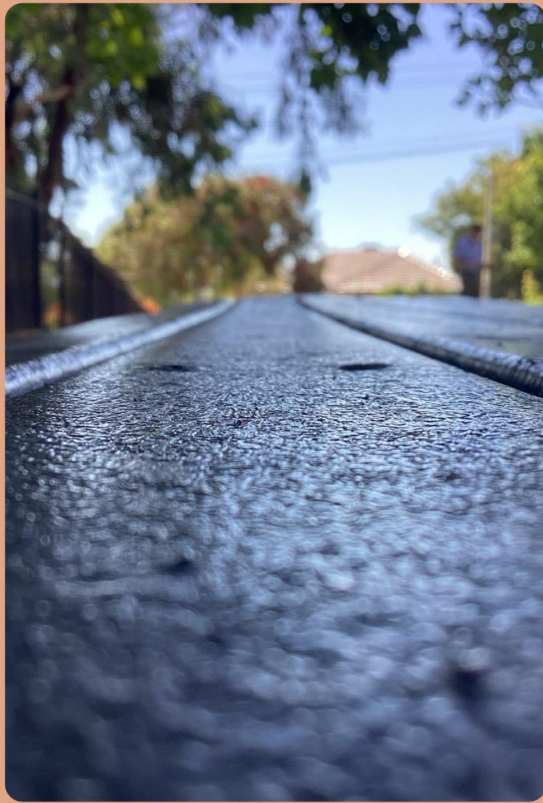


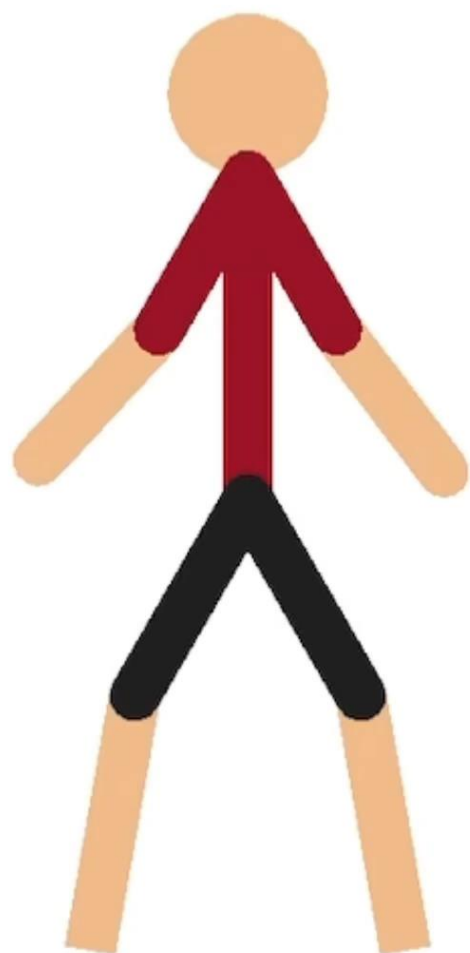






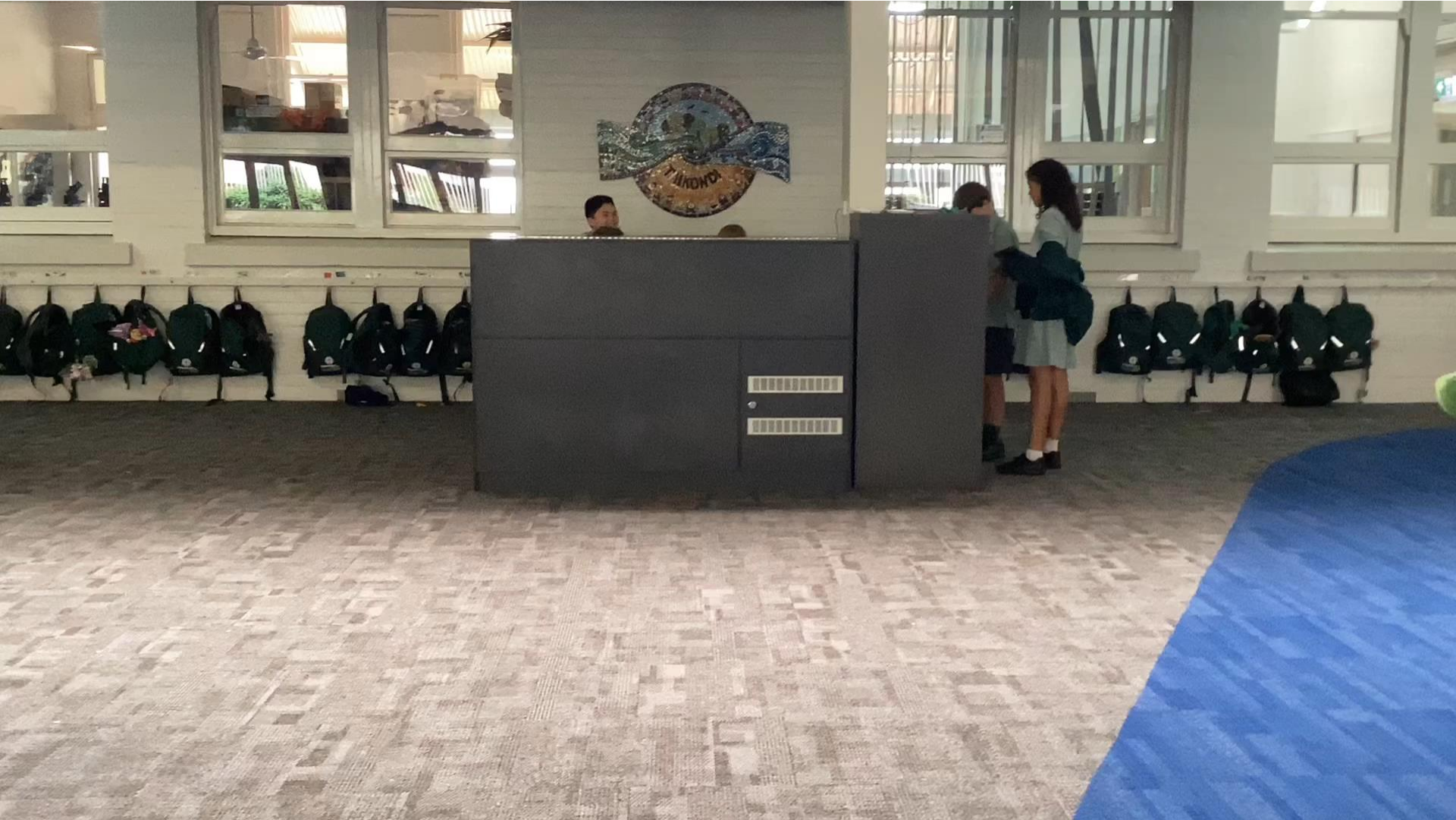




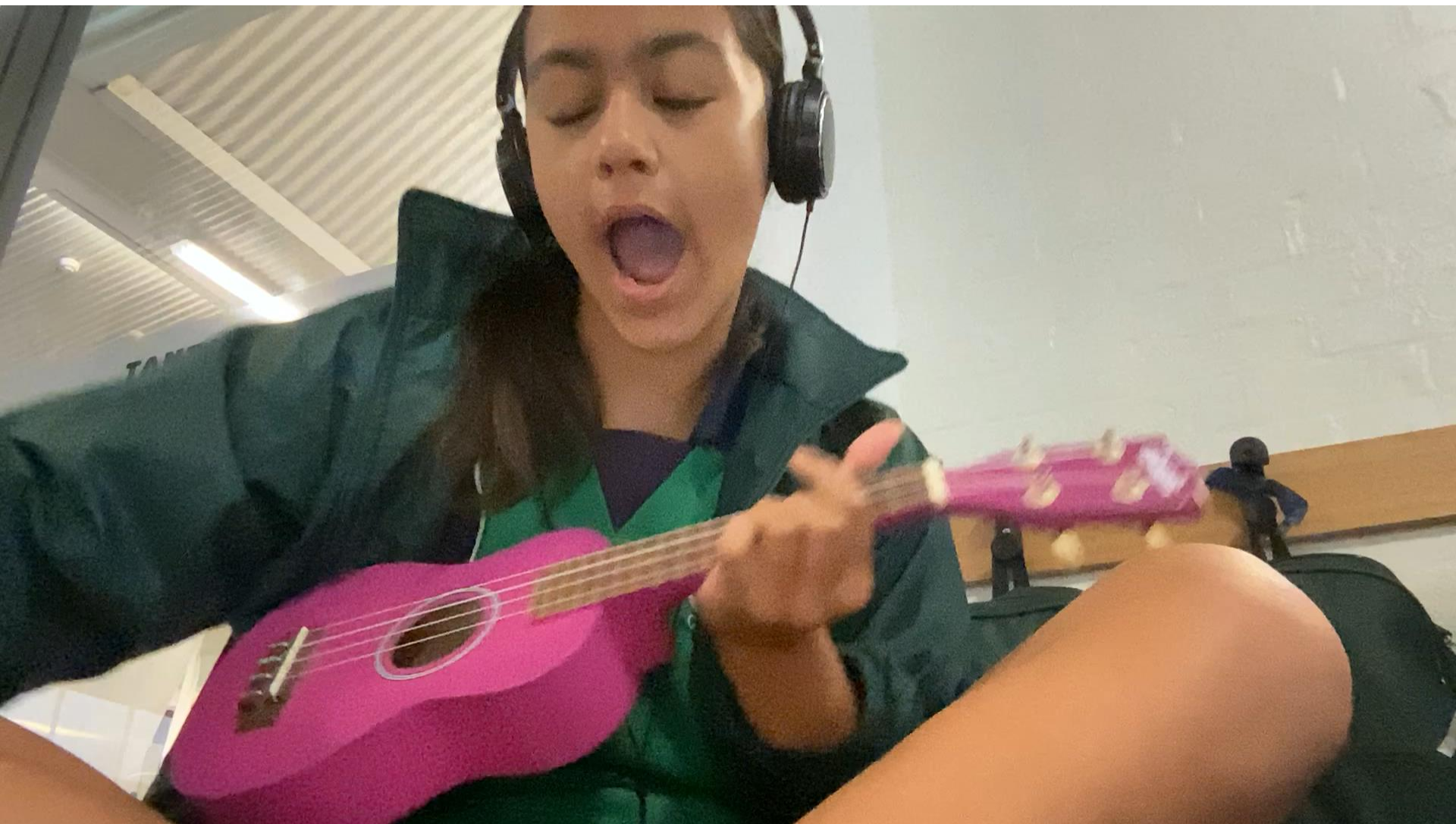




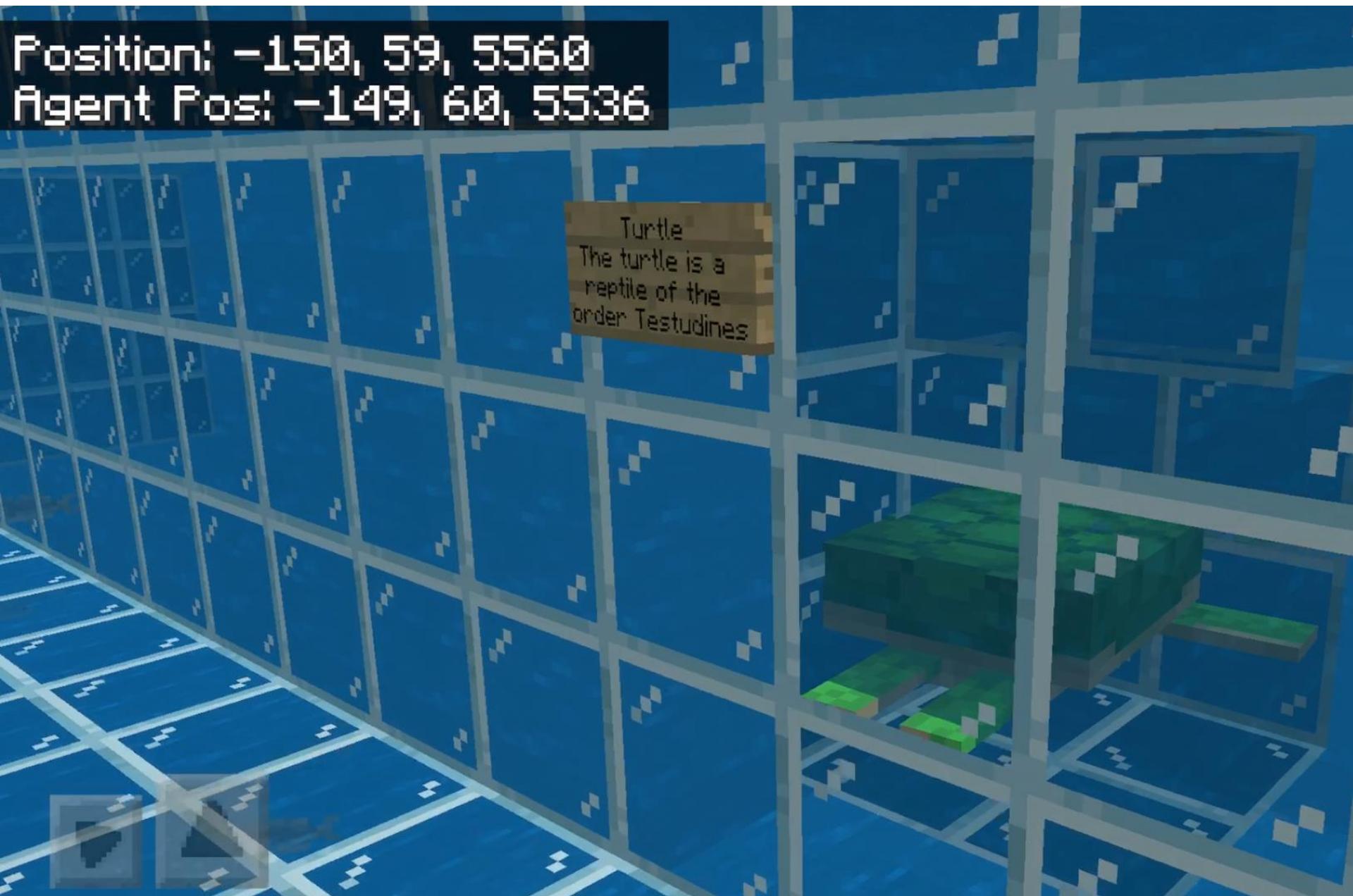






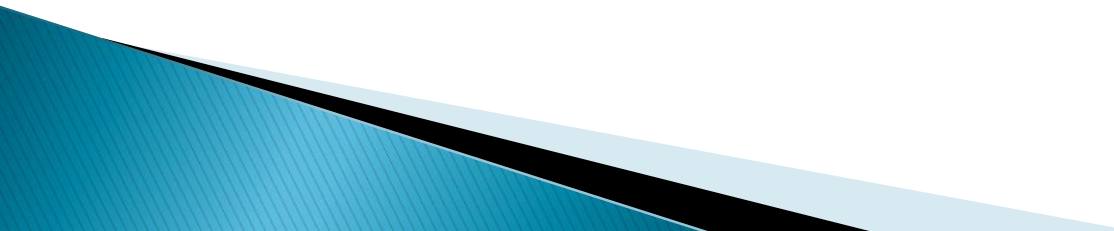


Position: -150, 59, 5560  
Agent Pos: -149, 60, 5536





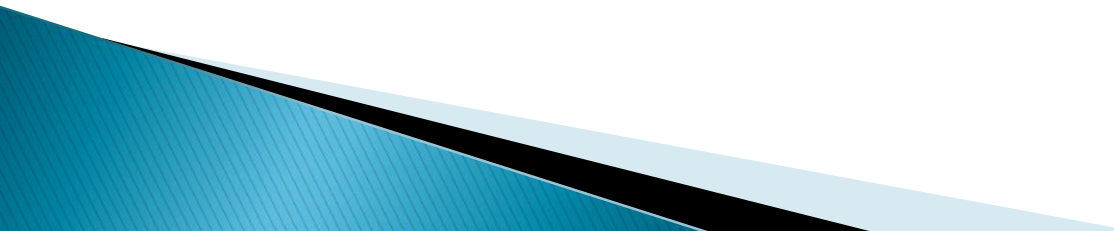
# Putting parents in the driver's seat

- ▶ Apple Classroom
  - ▶ Jamf Teacher– Lesson (Sketchers)
  - ▶ Jamf Student
  - ▶ Apple TV– Freeform
- 

# Supporting students with transition into the 1 to 1 iPad program (AB)

- ▶ iPad boot camp completed (Weeks 1–3)
- ▶ ICT Acceptable Use Agreement
- ▶ Greater responsibility for device
- ▶ Greater accountability with usage
- ▶ Use of Apple management systems
  - All Apple IDs managed by school
- ▶ Apple classroom and engaging with students

# Keeping students safe

- ▶ School filtering
  - ▶ Apple Classroom
  - ▶ School approved apps only
  - ▶ Screen Time – ability to shut the device down from 9pm – 7am
  - ▶ Not sent home until some behaviours and competencies have been demonstrated
  - ▶ Home responsibilities – not deleting history, internet access at home
- 

# Cyber Safety... (DT)

Think you know?

What are the issues that we see crop up the most?

- Parents 'venting' on line....

- Kids accessing apps that are not within their age range...

- Kids sledging on line...

**BOOT CAMP!**





# Cyber safety...

What can you do?

Consider the influences you want your kids to have....

Be across their access...share, track and monitor.

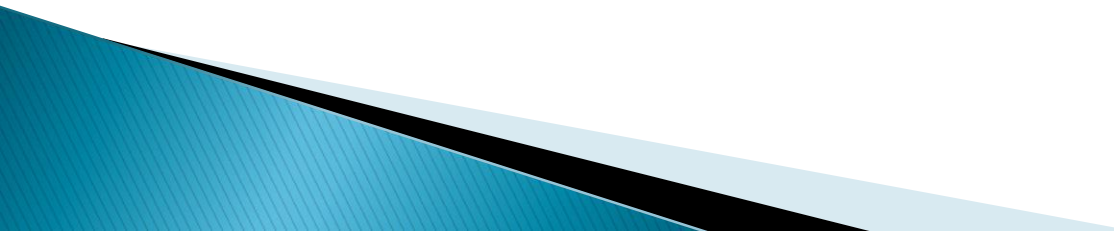
Understand that once it's posted, it stays...

Help your children to understand this...

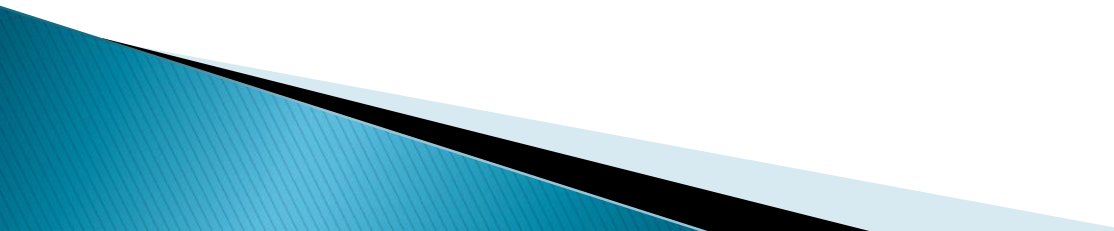
Susan McLean visit 26<sup>th</sup> or 27<sup>th</sup> March



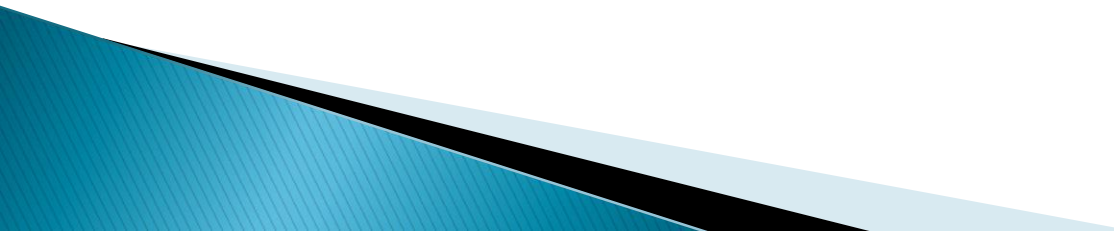
# Partnership with parents and caregivers

- ▶ iPads are a learning tool
  - ▶ To be used at home as a learning tool
  - ▶ School support with user agreement and guidelines/essential agreements for home use
  - ▶ Won't be apps on iPads which aren't approved by school
  - ▶ Please talk to us if there are issues
  - ▶ Please feel free to provide any other feedback
- 

# What will it cost? (SW)

- ▶ Families pay an annual ICT Levy of \$180 for 3 years (Yrs 4/5/6).
  - ▶ Until it is paid off, the device is school-owned and school-controlled.
  - ▶ If a screen is broken we will investigate it. If it's accidental we will repair the first breakage but will not repair subsequent breakages.
- 

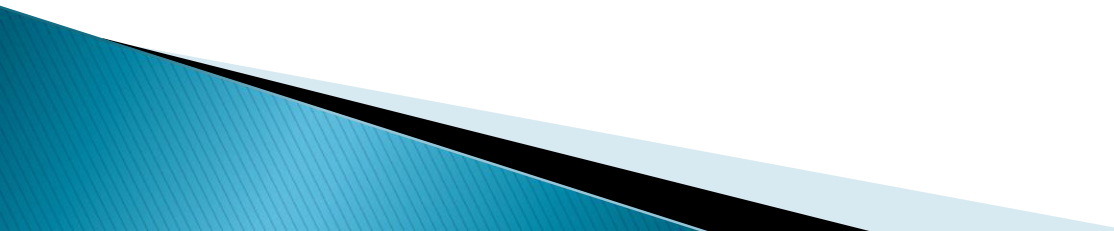
# Other protocols

- ▶ iPad covers
    - Provided by school. Families can purchase replacements.
  - ▶ Use of iPads in school grounds
  - ▶ Use of iPads on buses and at school camps
  - ▶ Air-dropping of photos/files
  - ▶ These items were addressed in Boot Camp
  - ▶ Consequences for misuse
    - iPad won't be taken away but there will be greater restriction
- 

# Moving Forward

- ▶ An exciting program
- ▶ Greatly improved opportunities for students
- ▶ Positive results 2019–2023
- ▶ Will continue to review and make improvements

We are committed to working with you to ensure the success of the program





# Any questions?

Feel free to email them in, phone or speak with one of us at any time.