

2023 Year 2



IMMANUEL
Gawler

LOCAL • GLOBAL • CONNECTED

A primary school of the Lutheran Church

Class Handbook

Stacey Baldock and Sam Lord

Dear Year 2 Families,

Welcome to our Year 2 learning community! We are delighted to have you join us as we learn together this year.

This note is designed as a reference point for some beginning information to help you get settled into 2023.

Please don't hesitate to ask questions. We look forward to getting to know you and your child throughout the year.

We have also attached a short survey to help get to know your child and family better. You are welcome to email a photo of your responses or return the hard copy to school.

Kind regards,

Sam Lord and Stacey Baldock



Communication

- We will be sharing our learning regularly through **Seesaw**, as well as Year 2 general information. Please ensure you check it regularly.
- **Operoo**– This is our main way of managing permissions and consents for excursions. The school will be making some changes so that it is more user friendly as a response to feedback we've received.
- **Weekly Updates** – These are emailed every Monday afternoon. This will detail our homework for the week, including Year 2 updates and reminders about upcoming events.
- **Email**- We understand meeting face to face is not always possible, in which case email is the next best option. Our email addresses are...

saml@ilsg.sa.edu.au

staceyb@ilsg.sa.edu.au

Daily Routines

- School begins promptly at 8:50am. The morning is an essential part of the day for children to get themselves organised and prepared for their learning. Important literacy lessons are often taught in the morning which is why we encourage all children to be on time.
- Late Arrivals/Early Departures – please sign in at the office if you are late to school (after 9am) and ensure you sign out

at the office if leaving early (before 3:25pm). Please communicate with us if you are planning to pick your child up early so that we can prepare them for this and allow less disruption of whole-class learning.

- Brain Food and Water – please pack a healthy snack (fresh/dried fruit or vegetables) and a NAMED water bottle each day.
- Nut Aware – please remember we are a ‘nut aware’ school.
- After School Pick-Up – It is important to have an organised location for your child to meet you after school. Each day we receive an IGOSH booking list and will communicate who will be in IGOSH that afternoon.

Who else is involved in your child’s learning?

- LOTE: Mrs Charmaine Strickland (Tuesday)
- Music: Mr. Dwayne Hueppauff (Thursday)
- Sport: Mr Richie Cochrane (Thursday)
- Technology: Mr Glynn Morgan (Friday with classroom teachers)
- LSA (Lutheran Schools Assistant): Jess Buckler
- Mr Michael Blasche and Mr Andrew Tiller will also be teaching a couple of lessons a week in Year 2 Baldock this year as Stacey works on whole-school literacy development.

Library

All Year 2 children will need to bring a library bag on WEDNESDAYS for our library borrowing.

Important Dates...

Worship & Praise – *Every Friday 10:30am in Taikondi*

- *2 Lord will be presenting in Term 2, Week 5*
- *2 Baldock will be presenting in Term 3, Week 6*

Assembly – *Monday 2:40pm in weeks 4 & 8 of each term*

- *We will be presenting in Term 4, Week 4.*

iPads

This year we are excited to share that children in Year 2 will have 1:1 ipads. These are school property and will be kept at school. An ICT Acceptable User Agreement will be sent home shortly via Operoo, which needs to be signed by the students and a parent/caregiver.

We aim to educate our students to understand the importance of safe and responsible use of ICT. Foundation to Year 3 expectations include;

- Making good choices
- Being safe
- Being kind
- Asking for help

Keeping Safe Curriculum

This year Immanuel will be implementing the Keeping Safe Curriculum from Foundation to Year 6. This curriculum covers 4 main topics...

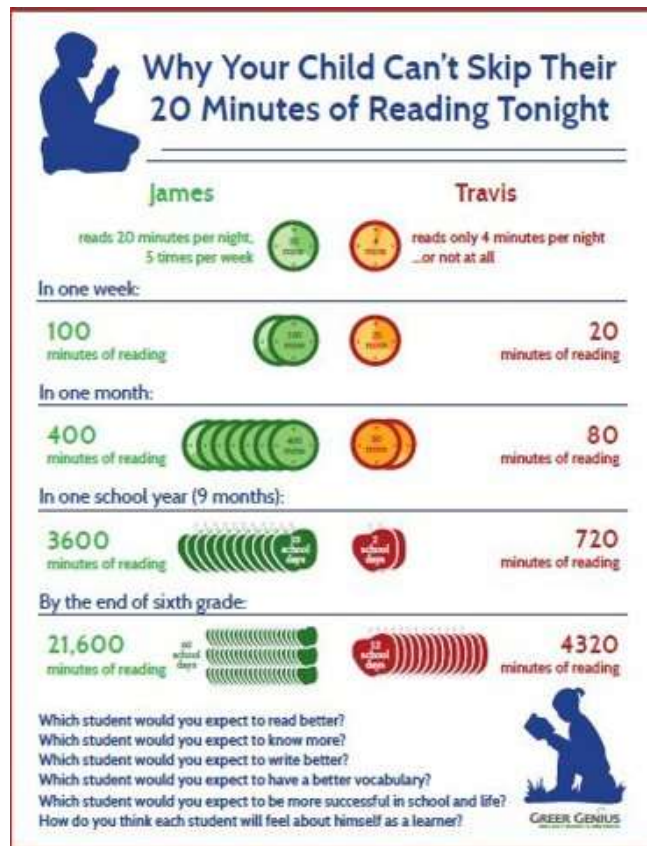
- The right to be safe
- Relationships
- Recognising and reporting abuse
- Protective strategies

These topics are covered in a way that is appropriate for each age group. Please get in touch if you would like more information about this curriculum, or reach out to a member of leadership if you have any concerns or queries.

Homework

The IB cites the following as the key elements of a good learning program: Knowledge, Skills, Concepts, Attitudes and Action.

- Homework in Year 2 is mainly focused on consolidating reading skills and reading for enjoyment and practice. We encourage all children to read for at least 10 minutes per night aloud to an adult who can check for meaning and accuracy.
- In addition to reading, there may also be some spelling skills, maths games or Unit of Inquiry activities suggested.
- All homework instructions will be provided in our Weekly Update email each Monday.



Camp

Our Year 2 camp will be held in Week 2 of Term 4 at AFL Max. The purpose of this camp is to create a fun and enjoyable first camp experience that builds independence and resilience. On the camp, the children will be learning about wellbeing, nutrition and how to live a healthy lifestyle.

The cost of this camp will be communicated to you later in the year once we have confirmed numbers and bus prices. To give you some indication, the 2022 camp to AFL Max cost was \$205.

Term 1 Dates

Here is a summary of the important dates for Term 1:

WEEK 1

Friday February 3: Opening Worship & Praise 10:30am

WEEK 3

Wednesday Feb 15: Valuing Safe Communities training for people wishing to be parent volunteers

WEEK 5/6: Learning Conferences (Dates TBC)

WEEK 7

Monday March 13: Adelaide Cup Public Holiday

Tuesday March 14 – Friday March 17: SWIMMING

WEEK 10

Friday April 7: Good Friday (Public Holiday)

WEEK 11

Monday April 5: Easter Monday (Public Holiday)

Friday April 14: Last day of Term One

Assessment at Immanuel Gawler

The key purposes of assessment at Immanuel Gawler are:

- To promote student learning
- To provide information to staff and parents about student learning
- To help teachers evaluate their learning program
- To ensure that requirements for assessment in the Australian Curriculum are met

Assessment looks at the learner as a whole. This includes:

- The knowledge a learner has gained
- The understanding of concepts the learner has shown
- The skills the learner can demonstrate
- The attitudes the learner has developed
- The action the learner takes

Assessment also looks at how students demonstrate the attributes of the IB Learner Profile: Inquirers, Knowledgeable, Thinkers, Communicators, Principled, Open-minded, Caring, Risk-takers, Balanced, Reflective

At Immanuel Gawler we believe that assessment should:

- Be simple and authentic
- Be relevant to the learner
- Be planned and clearly understood by students
- Provide feedback for students and teachers
- Be a continuous process and part of students' learning
- Allow for reflection by students and teachers
- Provide for student choice and different learning needs and styles

Assessment in the classroom and across the school includes:

- Standardised testing
- Observations of students' approaches to learning
- Use of student work samples
- Students' own reflections and reflections of peers
- Formal assessment tasks or tests

Reporting to parents takes place in a number of ways:

- Formal reports (Terms 2 and 4)
- Learning conferences (Terms 1 and 3, which may involve parents, teachers and students)
- Ongoing reporting of student learning and classroom life through the use of Seesaw
- The Year 6 PYP Exhibition
- Parents are also welcome at any time to make appointments to see teachers regarding their child's learning

To ensure accurate assessment and reporting, moderation takes place between teachers, where teachers compare observations and work samples from all students in the year level

To see our full assessment policy, please go to our website: <http://www.ilsg.sa.edu.au/curriculum/ib-program>

Language at Immanuel Gawler

The key goals of the language program at Immanuel Gawler are to develop in students:

- An ability to speak, listen, view, present, read and write confidently in a range of contexts
- An understanding of how language works, including the language features and structures of Australian English
- An appreciation of other languages and cultures
- A knowledge and appreciation of different forms and styles of literature and how it is used to make sense of the world
- An ability to effectively read, view, listen, speak, write and create

English learning at Immanuel Gawler involves:

- Development of oral language (speaking and listening) skills
- Building an understanding of phonological awareness (identifying sounds in language) and phonics (connections between letters and sounds)
- Building reading skills of fluency, vocabulary and comprehension
- Developing understanding of how writing is structured (including grammar, spelling and different writing forms) and how written expression is used effectively
- Creating, sharing and appreciating different texts

Students with language learning difficulties are supported by:

- In class differentiation, where teachers modify tasks or provide support as required
- Additional support from teacher aides in class or in small groups
- Participation in specific language and literacy programs with teacher aides or the Learning Support Coordinator
- Targeted intervention through development of a Personal Learning Plan (PLP) or Individual Needs Summary (INS)

Immanuel Gawler values learning of additional languages and learning about other cultures. This includes:

- Providing support to students with a language background other than English and providing opportunities for them to appreciate and share their home language and culture
- Providing opportunities for learning additional languages through our LOTE (Languages Other Than English) program, including our focus language of Indonesian
- Providing opportunities for learning about other cultures through units of inquiry and through the LOTE program

To see our full language policy, please go to our website: <http://www.ilsg.sa.edu.au/curriculum/ib-program>

Keeping Safe Child Protection Curriculum

Students at Immanuel Gawler will be taught the Keeping Safe Child Protection Curriculum as part of our wider Health curriculum.

Keeping Safe is centred on the right of children to:

- Be treated with respect and to be protected from harm
- Feel and be safe in their interactions with adults and other children and young people
- Understand, as early as possible, what is meant by 'feeling and being safe'
- Live and learn in a safe environment.

The curriculum is:

- Developed by child protection experts, education leaders and teachers
- Evidence based and highly regarded nationally and internationally
- Regularly updated to align with contemporary research and curriculum
- Proactive rather than reactive
- Delivered by KS:CPC trained teachers – teachers at Immanuel Gawler have been trained in delivery of this curriculum

The curriculum has four key focus areas:

- The right to be safe
- Relationships
- Recognising and reporting abuse
- Protective strategies

The program covers some sensitive topics

- There are clear directions for teachers to cover these in age appropriate ways, which cater for culture, family backgrounds and disabilities
- These topics often provide children with the best information and strategies to help keep them safe

- Parents/carers are encouraged to provide staff with any relevant information that could assist them with the delivery of the curriculum for their child